

FOR SALE

\$495,000



1045 Outer Park Dr., Springfield, IL 62704

Professional Office Building For Sale

Property Information

SQ. FT. 18,000
LOT SIZE .89 acres

ZONING R-5b
LIST PRICE \$495,000

Area

Property is located on the central-west side of Springfield, just west of Hy-vee and the intersection of MacArthur and Outer Park. Located near other offices, retailers and residential neighborhoods.

PROPERTY DESCRIPTION

Stand-alone office building for sale just west of MacArthur Blvd. Property features 3 floors plus a basement consisting of meeting areas, a break room and storage. 1st and 2nd floors contain multiple private offices and meeting rooms. 3rd floor ready for ready for build-out. Stand-by generator in place. \$27.50/sf reflects deferred maintenance and needed repairs. Make an offer!

FOR MORE DETAILS CONTACT:

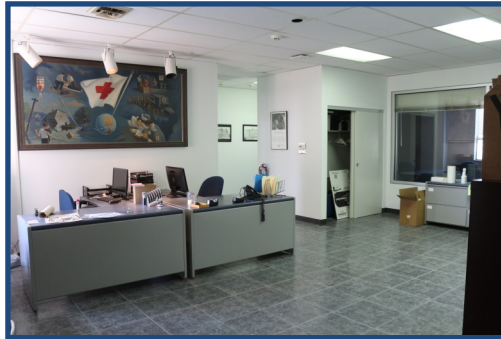
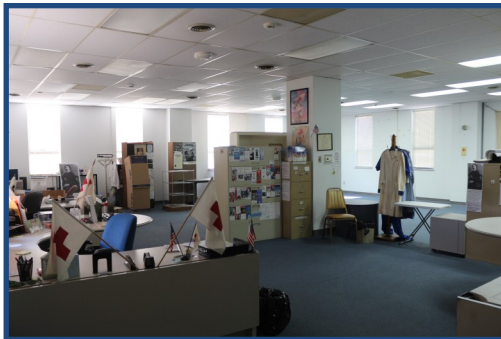
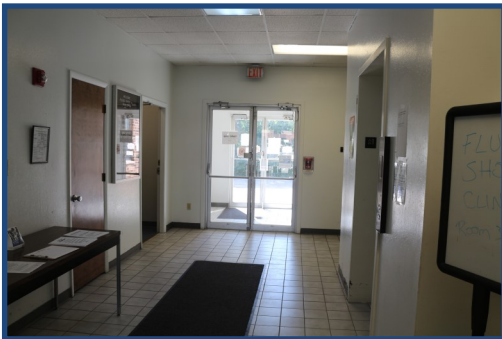
Curtis Tillett | 217-726-3298 | curtis@curtistillett.com

CURTISTILLETT.COM

THE REAL ESTATE GROUP
427 E. Monroe, Suite 100
Springfield, IL 62704
217-787-7000

FOR SALE

\$495,000



FOR MORE DETAILS CONTACT:

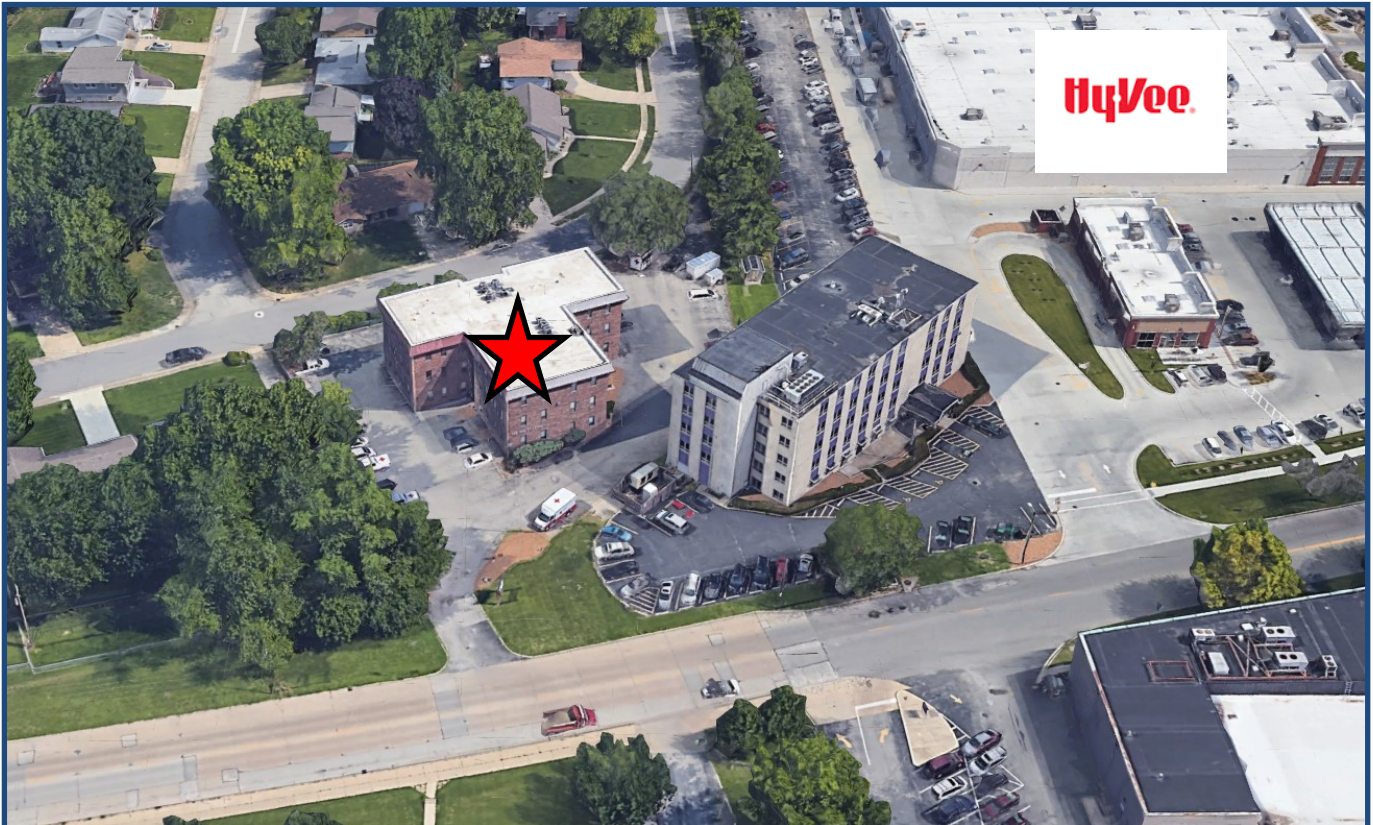
Curtis Tillett | 217-726-3298 | curtis@curtistillett.com

CURTISTILLETT.COM

THE REAL ESTATE GROUP
427 E. Monroe, Suite 100
Springfield, IL 62704
217-787-7000

FOR SALE

\$495,000



CURTISTILLETT.COM

THE REAL ESTATE GROUP
427 E. Monroe, Suite 100
Springfield, IL 62704
217-787-7000